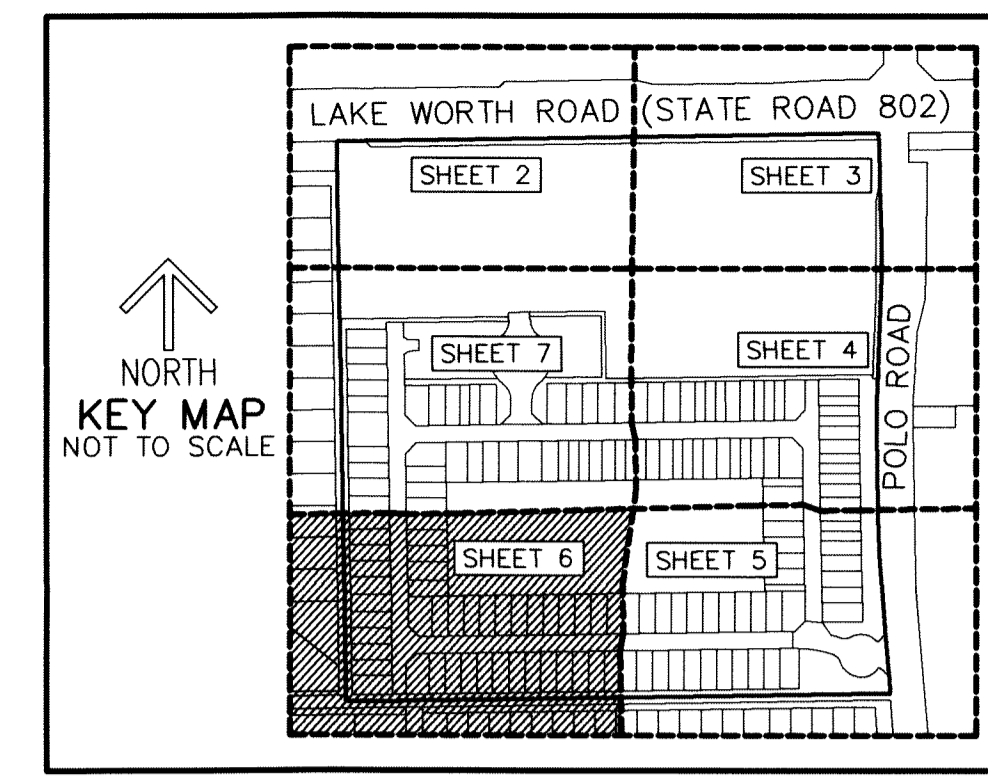


THIS INSTRUMENT PREPARED BY  
 DAVID P. LINDLEY  
 OF  
**CAULFIELD and WHEELER, INC.**  
 SURVEYORS - ENGINEERS - PLANNERS  
 7900 GLADES ROAD, SUITE 100  
 BOCA RATON, FLORIDA 33434 - (561)392-1991  
 CERTIFICATE OF AUTHORIZATION NO. LB3591

# POLO LEGACY MXPD

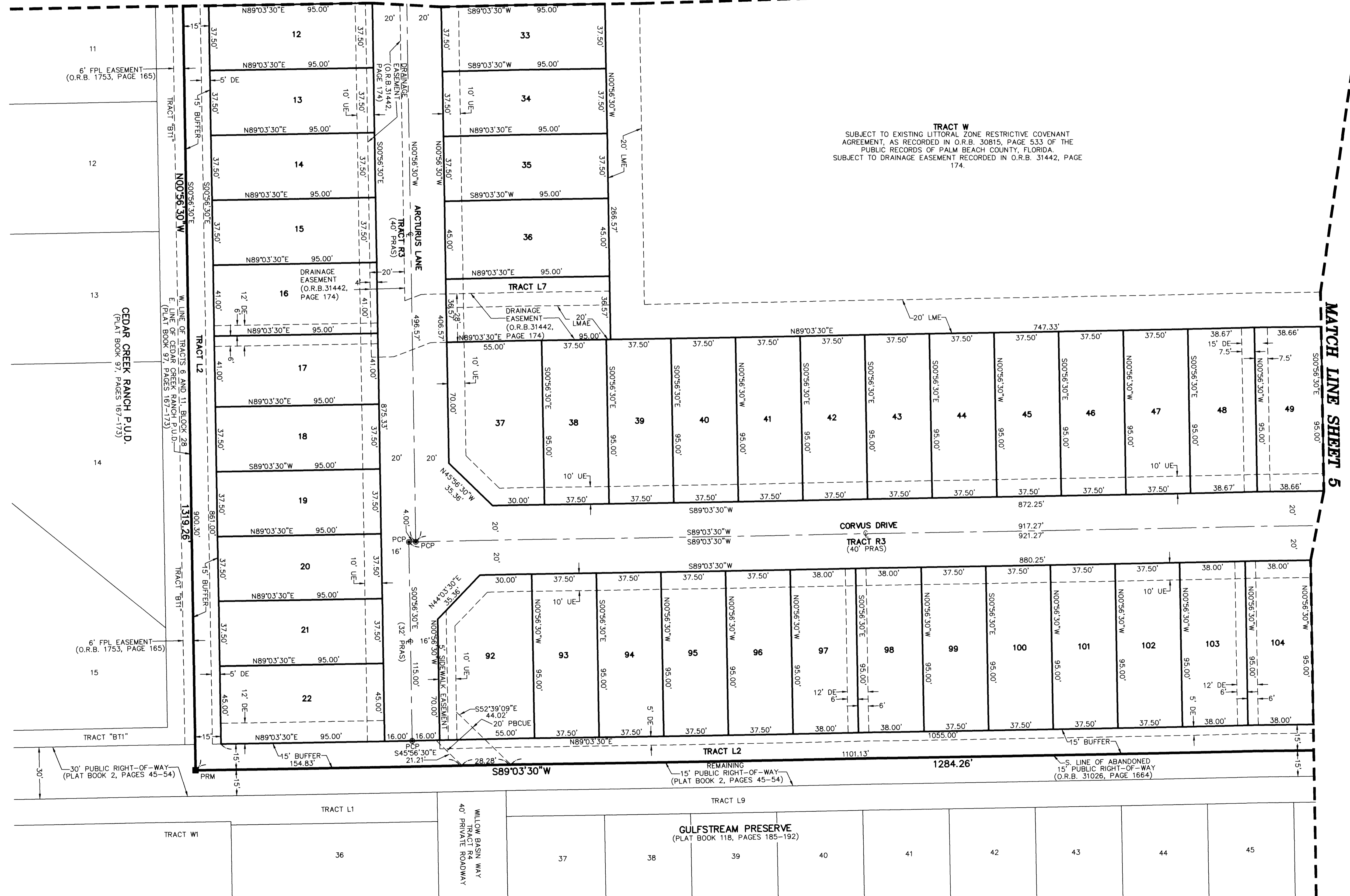
A MIXED USE PLANNED DEVELOPMENT  
 BEING A REPLAT OF ALL OF TRACT 11 AND A PORTION OF TRACTS 5, 6 AND 12, BLOCK 28,  
 TOGETHER WITH THE NORTH 15 FEET OF THE 30 FOOT RIGHT-OF-WAY LYING SOUTH OF AND ADJACENT TO SAID  
 TRACTS 11 AND 12, BLOCK 28, THE PALM BEACH FARMS CO. PLAT NO. 3,  
 AS RECORDED IN PLAT BOOK 2, PAGE 45 THROUGH 54 OF THE PUBLIC RECORDS OF PALM BEACH COUNTY, FLORIDA,  
 LYING IN SECTION 29, TOWNSHIP 44 SOUTH, RANGE 42 EAST, PALM BEACH COUNTY, FLORIDA



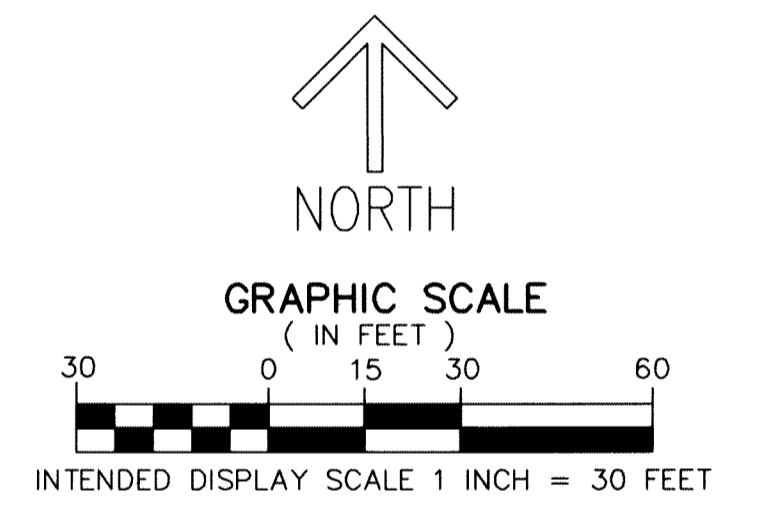
143

SHEET 6 OF 7

MATCH LINE SHEET 7



**TRACT W**  
 SUBJECT TO EXISTING LITTORAL ZONE RESTRICTIVE COVENANT  
 AGREEMENT, AS RECORDED IN O.R.B. 30815, PAGE 533 OF THE  
 PUBLIC RECORDS OF PALM BEACH COUNTY, FLORIDA.  
 SUBJECT TO DRAINAGE EASEMENT RECORDED IN O.R.B. 31442, PAGE  
 174.



- LEGEND / ABBREVIATIONS**
- C - CENTERLINE
  - Δ - DELTA (CENTRAL ANGLE)
  - CB - CHORD BEARING
  - CD - CHORD DISTANCE
  - DE - DRAINAGE EASEMENT
  - E - EASTING (WHEN USED WITH COORDINATES)
  - L - ARC LENGTH
  - LB - LICENSED BUSINESS
  - LMAE - LAKE MAINTENANCE ACCESS EASEMENT
  - LME - LAKE MAINTENANCE EASEMENT
  - L.W.D. - LAKE WORTH DRAINAGE DISTRICT
  - MXPD - MIXED USE PLANNED DEVELOPMENT
  - N - NORTHING (WHEN USED WITH COORDINATES)
  - O.R.B. - OFFICIAL RECORD BOOK
  - PBCUE - PALM BEACH COUNTY UTILITY EASEMENT
  - PRAS - PRIVATE RESIDENTIAL ACCESS STREET
  - PC - POINT OF CURVATURE
  - PT - POINT OF TANGENCY
  - PNT - POINT OF NON-TANGENCY
  - R - RADIUS
  - R/W - RIGHT-OF-WAY
  - UE - UTILITY EASEMENT
  - WMAE - WATER MANAGEMENT ACCESS EASEMENT
  - PRM - DENOTES SET PERMANENT REFERENCE MONUMENT  
 4" x 4" x 24" CONCRETE MONUMENT WITH  
 ALUMINUM DISK STAMPED "C&W PRM LB3591"  
 UNLESS OTHERWISE NOTED
  - PCP - DENOTES SET PERMANENT CONTROL POINT  
 NAIL AND METAL DISK STAMPED "PCP LB3591"
  - △ - DENOTES HORIZONTAL CONTROL POINT
  - ▲ - DENOTES SET PERMANENT REFERENCE MONUMENT  
 NAIL AND DISC STAMPED "PRM" LB 3591

**COORDINATES, BEARINGS AND DISTANCES**  
 COORDINATES SHOWN ARE GRID  
 DATUM = NAD 83 (1990 ADJUSTMENT)  
 ZONE = FLORIDA EAST  
 LINEAR UNIT = US SURVEY FEET  
 COORDINATE SYSTEM 1983 STATE PLANE  
 TRANSVERSE MERCATOR PROJECTION  
 ALL DISTANCES ARE GROUND UNLESS OTHERWISE NOTED  
 SCALE FACTOR = 1.0000236  
 GROUND DISTANCE X SCALE FACTOR = GRID DISTANCE  
 BEARINGS AS SHOWN HEREON ARE GRID DATUM,  
 NAD 83 (1990 ADJUSTMENT), FLORIDA EAST ZONE.